



Do your assets have a habit of disappearing?

Discourage theft and keep your property intact with Metalcraft's Tamper-Evident Labels. If someone attempts to remove the label the word "VOID" is left behind on the surface of the asset and the back of the label. Add a bar code and/or human readable number to the label and use it as part of an overall asset tracking system.

Use these labels to make a statement about your company or school by displaying a logo or stylized type in any of Metalcraft's standard colors (black, red, yellow, green or blue). Custom spot colors and four-color process are also available at no additional charge. Subsurface printing provides an extra layer of protection for logos, copy, and bar code against solvents, caustics, acids and mild abrasion. This unique process eliminates the need for a laminate thereby eliminating the additional cost as well as the possibility of delamination.

Key Product Features

- Nontransferable properties protect assets by leaving "VOID" on application surface and label
- Digital printing process ensures bar code readability as well as crisp, clean company logos
- Durable polyester material easily conforms to uneven or radius surfaces
- Subsurface printing protects against extreme solvents, caustics, acids and moderate abrasion while eliminating the need for a laminate
- Custom colors available at no additional charge

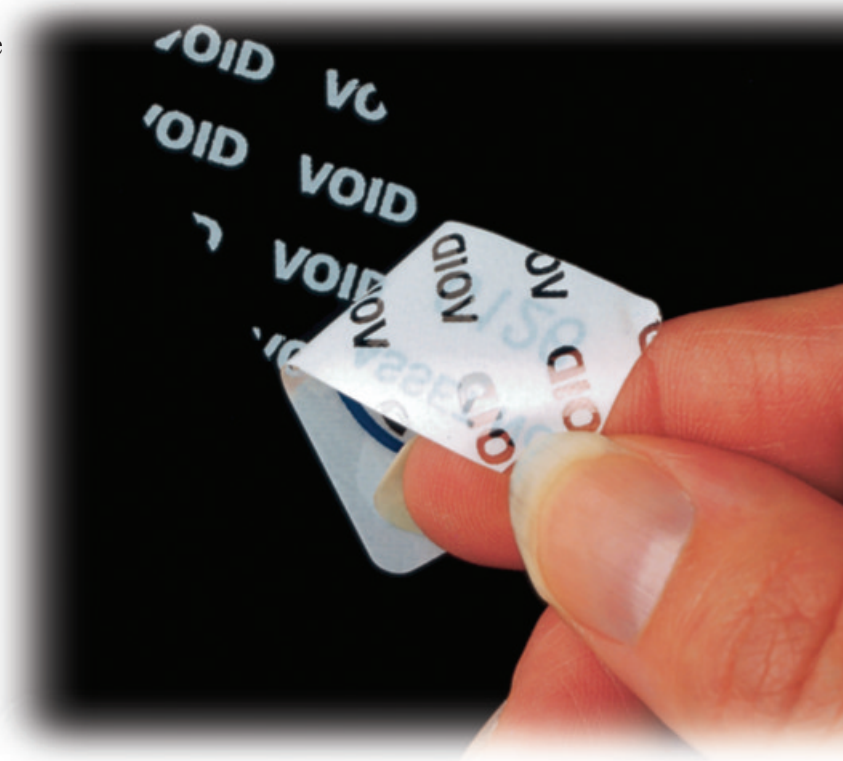
Not sure what product you need?

Call our trained Experts!

800-437-5283



3360 9th St. SW
Mason City, IA 50401
www.idplate.com
E-mail: metalcraft@idplate.com



Tamper-Evident Labels Specifications

Material: .002" thick tamper-evident polyester. This product can withstand temperatures up to 200°F for short durations.

Serialization: Bar code and human-readable equivalent is produced using the latest high-resolution digital technology available, which provides excellent clarity and easy scanning. Code 39 is the standard symbology with a range of 2.7 to 9.4 CPI (characters per inch). Optional symbologies include Code 128, I 2 of 5 and 2D DataMatrix, and QR Code.

This product is also available with human-readable numbers only or with straight copy.

Label Copy: The label copy may include block type, stylized type, logos or other designs.

Colors: Standard colors include black, red, yellow, green or blue. Custom spot colors also available at no additional charge. Due to contrast needed for the bar code scanner, all bar codes are black.



Standard Sizes:

No. 019: 2" x 1" No. 033: 1 1/2" x 3/4"
No. 191: 2" x 5/8" No. 277: 2" x 3/4"
No. 029: 1 3/4" x 5/8" No. 123: 1 3/4" x 1/2"
No. 254: 1 1/4" x 1/2" No. 694: 2 3/4" x 1 1/4"
Other sizes available upon request.

Adhesive: .0015" tamper-evident adhesive leaves "VOID" on application surface and label.

Packaging: Shipped on convenient rolls with scrap matrix removed for ease of removal. Cleaning solution is provided to assist in applying to a clean surface. Cartons are clearly marked to indicate serial numbers of labels.

Shipment: 6 work days upon receipt of order and proof approval.

To Order: Call **1-800-437-5283** and ask for customer service.

Test Results

These tests were conducted for a limited period of time in strict laboratory conditions. In order to achieve maximum satisfaction we highly recommend that any customer considering use of this product test the labels in the environment in which they will be used.

Heat Test: Tamper-Evident Labels are able to withstand intermittent heat exposure to 200°F and still leave the "VOID" pattern upon removal after label is allowed to cool to room temperature.

Chemical Soak Test: This rating measures effect on labels after being exposed to chemicals listed below for a 2 hour soak and a 48 hour soak.

Test Conditions	2-hour soak	48-hour soak
Water	No effect	No effect
Glass Cleaner	No effect	No effect
Bathroom Cleaner	No effect	No effect
Alcohol	No effect	No effect
Acetone	Very slight delamination	Delaminated
Sodium Hydroxide	No effect	No effect
Nitric Acid	No effect	No effect
Hydrochloric Acid	No effect	No effect
Brake Fluid	No effect	No effect